

THE AERO AERIAL

INSIDE THIS ISSUE:

<i>Jovian Radio</i>	1
<i>Repeaterless mobile</i>	1
<i>Station Activities</i>	2
<i>Net Reports</i>	2
<i>ECOMM/Public</i>	2
<i>Calendar</i>	3
<i>Info</i>	4

CQ CQ DE JOVE!

Anyone looking at the Aero ARC WEBSITE will notice a page devoted to "Mt. Essex Observatory". This is the name Joe WB3FMT and Frank AC3P have given to their astronomical pursuits. On that webpage are posted several pictures the largest planet in the Solar System, Jupiter.

Jupiter is more than a bright light in the sky. It is also a very large RF generator. With the proper equipment one can hear strange signals coming from the Great Planet. No. It's not little Jovians. It's the great planet itself with strongest magnetic field in the solar system, save for the Sun.

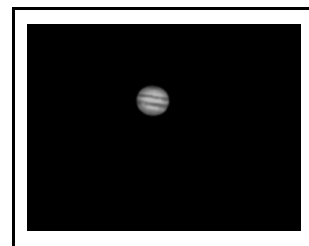
Through this field the planet rotates and its moons revolve creating many RF signals in the HF band that the casual listener may mistake for static.

These signals are particularly strong in the 20 Mhz. Region accessible to anyone with the proper equipment.

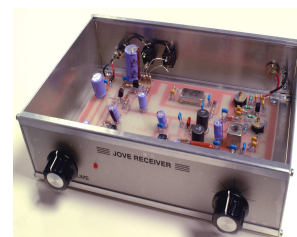
NASA has a webpage devoted to the Radio JOVE project. It is a kit construction project to build a 20 Mhz receiver and couple it to a 2 element wire beam antenna.

The plans along with a links to sample mpeg sound files can be found at <http://radiojove.nasa.gov>.

All the necessary information on building the Radio-Jove Receiver and antennas can be found there.



Jupiter from "Mt. Essex"



RADIO JOVE
CONSTRUCTION



ON THE ROAD WITHOUT REPEATERS

What can a travelling ham do when driving long distances on the interstate when there is either no repeater in range or there are no stations monitoring the repeaters?

The answer is the HF service nets.

There are four popular HF service nets on 40 meters. EASTCARS covers the East Coast on 7255 Khz. MIDCARS holds fourth for the midwest states on 7258 khz. WEST-CARS covers the Western part of the country on 7239 kzh

and SouthCars covering Dixie on 7251 Khz. On 20 meters is the Maritime Mobile Net at 14.300 MHz.

All nets are on SSB and welcome mobile check-ins.

STATION ACTIVITIES

Condolences to K3ROJ on the loss of Sadie. She often rode shotgun in Al's truck and was always good for a pet at Field Day.

WB3FMT has found an alternate power source. Just needs a few more kites with keys on the end of the string.

AI3G took is using the KB3JVP special antenna and getting good results on QRP.

AC3P is back from 8 land. Frank reported good signals

40 on meters with the 706 and Hustler HF mobile whip.

AC3F returns to the halls of academia.

WA3TAD is getting back into the groove.

Somebody get KB3JDE an calendar.

NET REPORTS

2 meter Net

WB3FMT (NCS)

AI3G

AC3P

70 Cm Net

AC3P (NCS)

AI3G

KA3SNY

KB3PGN

10 Meter Net

WB3FMT (NCS)

W3VRD

AC3P

KA3SNY

W3JEH

AI3G via 2 meters

E COMM/PUBLIC SERVICE

Baltimore County RACES will be resuming monthly drills from the various served agency sites on Tuesday September 9th.

Baltimore County ARES and RACES operations are now being performed under an umbrella organization, Baltimore County Auxiliary Communications Service. Participating Amateur Operators are

dually enrolled in both ARES and RACES.

The public service opportunities are kicking off for the late summer and fall.

October 4th is the ADA Walk held downtown. Contact Frank AC3P tp help.



Also October 11 is the Baltimore Marathon. Contact Ian, N3CVA for this major event.

September 2008

S U N	M O N	T U E	W E D	T H U	F R I	S A T
	1 Labor Day	2	3 Meeting Coffmans 7:30 p.m.	4	5	6
7	8	9	10 10 Meter Net 8 p.m.	11	12	13 ARRL VHF Contest
14 ARRL VHF Contest	15	16	17 Meeting Coffmans 8 p.m.	18	19	20
21	22	23	24	25	26	27 VE Testing White Marsh
28	29	30				



ABOUT THE AERO AMATUER RADIO CLUB

Meetings: First and Third Wednesdays at 7:30 p.m. at Coffman's Diner
(Middle River and Orem's Rd.)

Nets: See Local Area Net Schedule

Repeaters: W3PGA (147.24 MHz - / 449.575 MHz -)

WEBSITE: <http://www.aeroarc.us>

Officers

Joe Miko	WB3FMT	President
Doug Emer	AI3G	Vice-President
Frank Stone	AC3P	Recording Secretary
Pat Stone	AC3F	Corresponding Secretary
Warren Hartman	W3JDF	Treasurer
Ron Distler	W3JEH	Property Mgr

Committees

VE Testing	Pat Stone AC3F
Repeater	Phil Hock W3VRD
Public Service	Frank Stone AC3P
ECOMMS	Joe Miko WB3FMT
Contests	Doug Emer AI3G
Trustee	Frank Stone AC3P
Field Day	Bob Landis WA3SWA
Webmaster	Al Alexander K3ROJ
Archivist	Joe Miko WB3FMT

LOCAL AREA NETS

Day Time	Frequency (MHz)	NET NAME	
Daily	9 – 10 am	147.03	ORIOLE Net
Daily	6 – 6:30 p.m.	3.820	Maryland Emergency Phone Net
Daily	6:30 – 7 p.m.	146.670	Baltimore Traffic Net
Daily	7 p.m. and 10 p.m.	3.643	Maryland/DC/Delaware Traffic Net
2 nd Tues	7:30 p.m.	146.670	Baltimore County <u>RACES</u> COMMEX
2 nd Wed.	8 p.m.	28.445	AERO ARC Net
4 th Wed	8 p.m.	147.240	AERO ARC Net
5 th Wed.	8 p.m.	449.575	AERO ARC Net
